

Live Your Life Where Your Culture is!!!

Sanskriti overlooks 50 acres of recreations green with outstanding architecture and distinct of greens. It has eco-Friendly features with solar powered street lighting, provision for rain water harvesting & waste water recycling. It also has ample parking space and dedicated visitor's parking.

Enjoy the advantage of a location that's most coveted, be it business, be it travel, be it reaching somewhere on the time, always stay ahead.



SANSKRITI HIGHLIGHTS

INDOOR

Spa, Gym, Reading Room, Coffee Shop & Bakery Lounge,
Banquet, Separate Saloon for male and Female.
Cards & Billiards Room, Juice Bar.
Table-Tennis Room, TV lounge, terrace party Area.

OUTDOOR

Kids Play Area, Kid's Pool, Party Lawns, Barbeque Joints,
Semi-Covered Gazebos, Swimming Pool, Badminton Court
Meditation Lawn & Tree Court.

PAYMENT PLAN

CONSTRUCTION LINKED PAYMENT PLAN

At the time of booking	10% of BSP
On Allotment	10% of BSP
On Completion of Foundation	10% of BSP
On Casting of Basement Slab	10% of BSP
On Casting 2nd Floor Slab	10% of BSP
On Casting 5th Floor Slab	10% of BSP
On Casting 9th Floor Slab	10% of BSP
On Casting 12th Floor Slab	10% of BSP
On Brickwork	5% of BSP
On Interior Plaster	5% of BSP
On Flooring Tiles	5% of BSP
On offer of Possession	5% of BSP + Other Charges



Home & Soul



Earthcon Universal Infratech Pvt. Ltd.

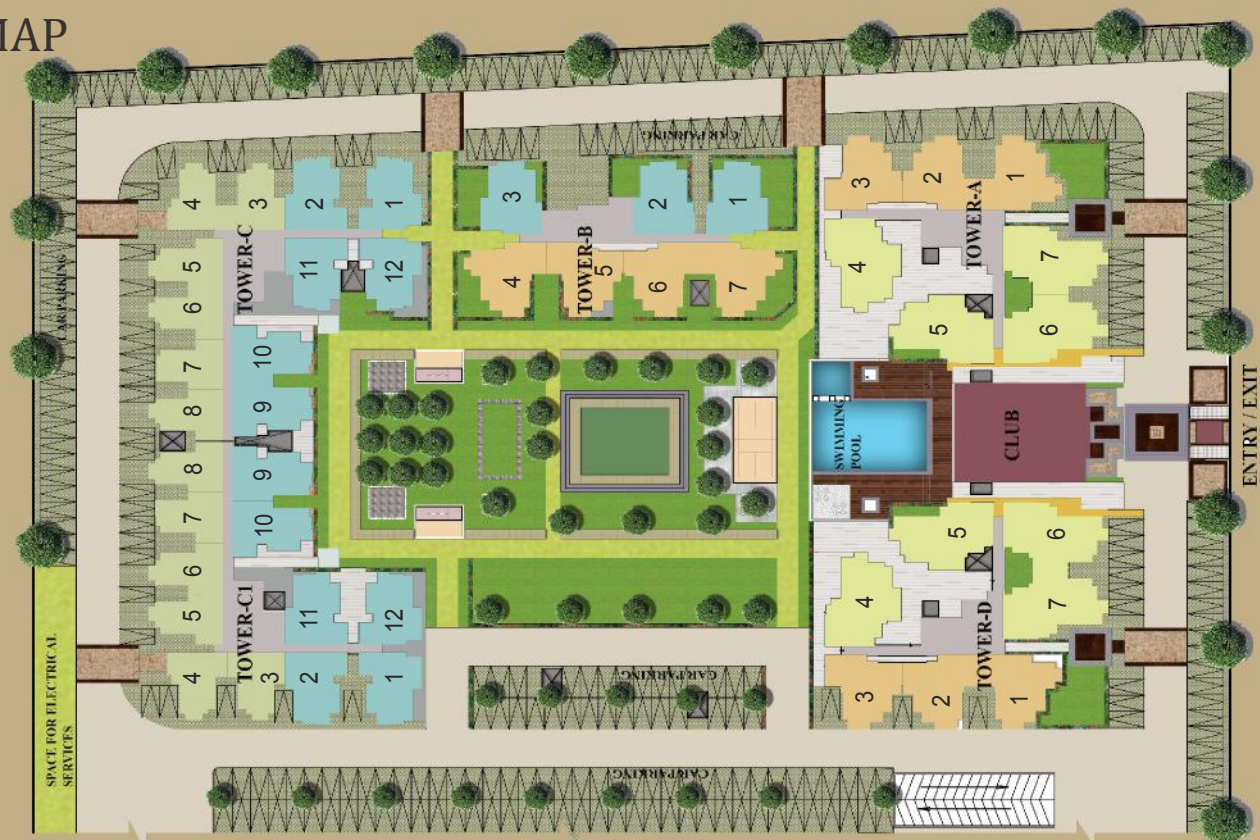
Site Add: Plot No. GH-10 Sector 1, Greater Noida (W)
Corporate Office: B-11, Sector - 1, Noida - 201301 (U.P) Tel: 0120 - 47734, Fax: 0120 - 4773401
www.earthcon.co.in

संस्कृति

आपके आदर्शों का घर

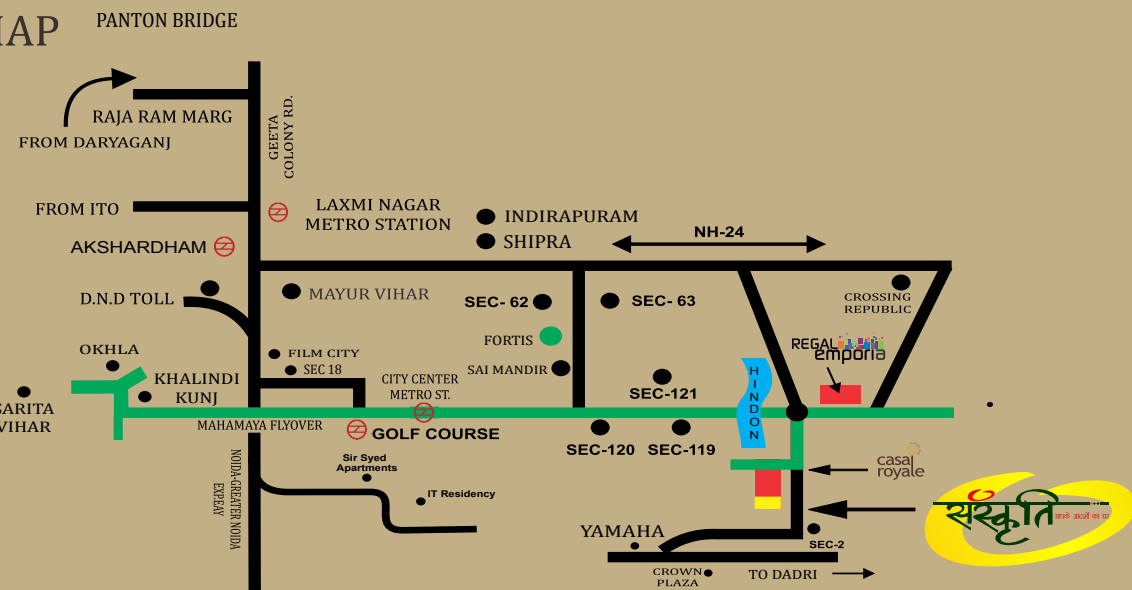
**2/3 BEDROOM APARTMENT
NOIDA EXTENSION**

SITE MAP

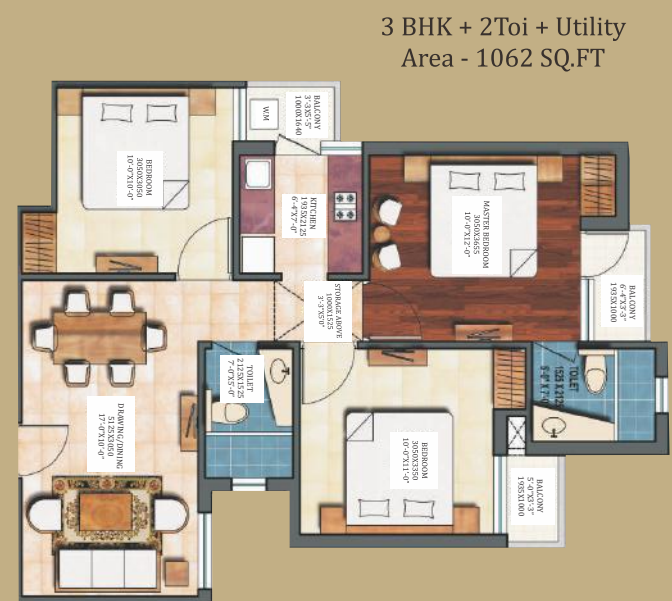


■ 2 BHK + 2T
 ■ 3 BHK + 2T
 ■ 3 BHK + 2T
 ■ 3 BHK + 3T + Servant

LOCATION MAP



FLOOR PLANS



SPECIFICATIONS

STRUCTURE

Earthquake resistant RCC Frame Structure as per Seismic Zone-5

FLOORING

Wooden Flooring in Master Bedroom/Vitrified Tiles in other Bedroom/drawing/dining/stairs and corridors with marble/kota stone flooring.

EXTERIOR

Permanent Finish/ Texture Paint

KITCHEN

Slabs are well-Furnished granite stone with Stainless Steel Sink and Drain Board. Glazed Tile Dado on Wall up to 2ft. Over Counter

BATHROOM

Equipped with Parryware / Hindware / Cera or Equivalent, Wash basins and WCS. Chrome plated tap fitting of Marc, Cera or Equivalent.

DOORS

All Door Frames in Marandi Wood with Skin Moulded Flush Doors & Windows Frames and Shutters in Aluminum

PAINTING

Oil Bond Distemper in Entire Flat

POP

POP Punning & Cornices in Entire Flat

ELECTRICAL

Electrical (Copper) Wiring as per ISI Code with Modular Switches. Circuits with MCBs of Approved Make. TV & Telephone Points in Every Room

SECURITY

Round-the-Clock Security System

POWER BACK UP

1 KVA with every flat

INDOOR AREA

Spa, Gym, Reading Room, Coffee Shop & Bakery Lounge, Banquet, Separate Saloon for male & female, Cards & Billiards Room, Juice Bar, Table Tennis Room, TV lounge, Terrace Party Area

OUTDOOR AREA

Kids Play Area, Kid's Pool, Party Lawns, Barbeque Joints, Semi-Covered Gazebos, Swimming Pool, Badminton Court, Pergolas, Meditation Lawn & Tree Court